

Test Case-28

Test Name: RJIL-IP-QA-DS-SYS-028

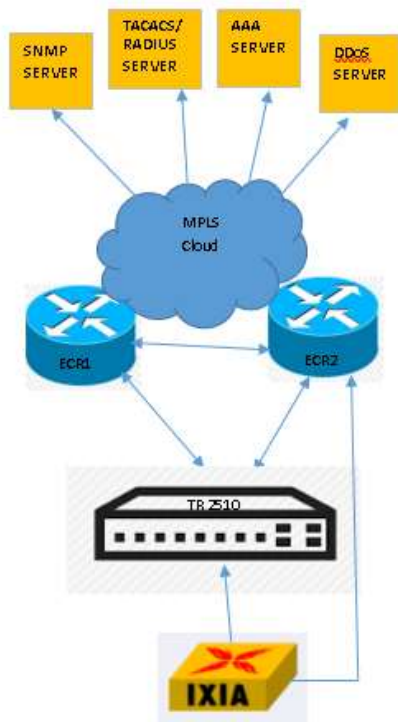
Test Objective: To check support for SSH compliancy, the system shall be able to initiate an SSH session and also the clients shall be able to login to the system using SSH protocol.

Test Configuration:

```
ip sshd enable
```

```
ssh -l root -d 10.64.46.248 -v2
```

Test Set up (Including Pre requisites): Switch , ECR 1, ECR2,IXIA



Procedure: Connect Switch to ECR1, ECR2

ssh to switch ip

Action:		Response:	
1	Need to initiate SSH session from switch to ECR and ECR to switch and linux server to switch.	1	Switch should be able to access ECR CMD through SSH and ECR should be able to ssh switch. Also linux server should be able to access the switch

Expected Result: Clients shall be able to login to the switch using SSH protocol

Actual Result:

```

GUICHECK>enable
password:
GUICHECK#ssh -l root -d 10.64.46.248 ?
-c    -- Cipher
-o    -- Number of passwd prompts
-p    -- Port num
-v    -- Version <1-2>
-s    -- Password
<cr>
GUICHECK#ssh -l root -d 10.64.46.248 -v ?
<1-2>    -- SSH client version
GUICHECK#ssh -l root -d 10.64.46.248 -v 2
Connecting to remote host...
Press 'q' or 'Q' to quit connection.
enter your password: █

```