



Test Report TR S2510PoE-DC
Firmware Version build 71585

Contents

1. Introduction	3
2. About This Test Report	4
3. Test Report	
A. ERPS	5



**1. The document communicates the changes in the patch for the
TECHROUTES TR S2510PoE-DC Series switch.**

This document is also known for problems and solutions.

2. About This Test Report

**This Test Report provides information for software changes in TR
S2510PoE-DC for ERPS.**

**Previous software version-Version 2.2.0C Build 71458;
Previous hardware version- V1.0;**

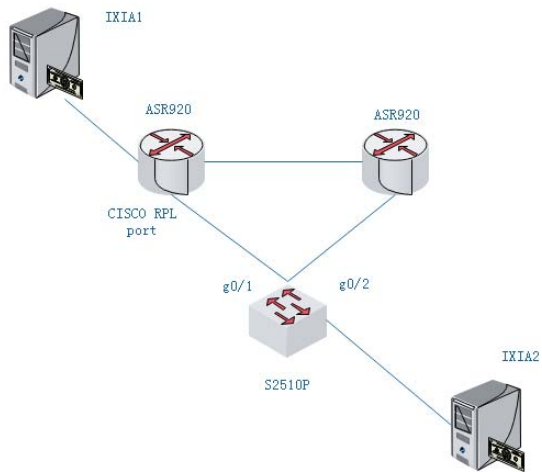
**Present software version- Version 2.2.0C Build 71585;
Present hardware version- V1.0;**



3. Test Report

A. ERPS Test

1. Topology:



Note: IXIA1---IXIA2 send both ipv4/ipv6 traffic to each other, each traffic use 10MB/1500byte (same as lab)

2. IXIA test configuration:

Transmit State	Suspend	Tx Port	Src/Dst Endpoint	Rx Ports	Flow Group Name	Configured Frame Size	Applied Frame Size	Frame Rate
			Traffic Item Name: ipv4		TX Mode: Interleaved, Src/Dst Mesh: OneToOne, Route Mesh: OneToOne, Bi-directional			
1			S2510P	Src/Dst Endpoint... CISCO;	ipv4-EndpointSet-1 - Flo...	Fixed: 1500	Fixed: 1500	10 Mbps
2			CISCO	Src/Dst Endpoint... S2510P;	ipv4-EndpointSet-1 - Flo...	Fixed: 1500	Fixed: 1500	10 Mbps
3			Traffic Item Name: ipv6		TX Mode: Interleaved, Src/Dst Mesh: OneToOne, Route Mesh: OneToOne, Bi-directional			
4			S2510P	Src/Dst Endpoint... CISCO;	ipv6-EndpointSet-1 - Flo...	Fixed: 1500	Fixed: 1500	10 Mbps
			CISCO	Src/Dst Endpoint... S2510P;	ipv6-EndpointSet-1 - Flo...	Fixed: 1500	Fixed: 1500	10 Mbps



2. S2510POE configuration:

Switch configuration

```
!  
link scan fast 10  
!  
  ethernet cfm ENABLE  
  ethernet cfm md mdnf STRING mdn west level 7  
  ma manf STRING man west meps 1-2 vlan 111  
!  
  ethernet cfm md mdnf STRING mdn east level 7  
  ma manf STRING man east meps 1-2 vlan 111  
!  
no spanning-tree  
!  
erps 1  
  control-vlan 111  
exit  
!  
!  
aaa authentication login default local  
aaa authentication enable default none  
!  
username admin password 0 admin  
!  
interface GigaEthernet0/1  
  switchport enhanced-link  
  switchport trunk vlan-allowed 111,333  
  switchport mode trunk  
  ethernet cfm ENABLE  
  ethernet cfm mep add mdnf STRING mdn east manf STRING man east  
mepid 1  
  ethernet cfm mep ENABLE mdnf STRING mdn east manf STRING man  
east mepid 1  
  erps 1 ring-port
```



```
erps 1 cfm-disable
  erps 1 mep down md east ma east level 7 local 1 remote 2
!
interface GigaEthernet0/2
  switchport enhanced-link
switchport trunk vlan-allowed 111,333
  switchport mode trunk
  ethernet cfm ENABLE
  ethernet cfm mep add mdnf STRING mdn west manf STRING man west
mepid 1
  ethernet cfm mep ENABLE mdnf STRING mdn west manf STRING man
west mepid 1
  erps 1 ring-port
  erps 1 cfm-disable
  erps 1 mep down md west ma west level 7 local 1 remote 2
!
interface GigaEthernet0/3
  switchport trunk vlan-allowed 111,333
  switchport mode trunk
!
interface GigaEthernet0/4
!
interface GigaEthernet0/5
!
interface GigaEthernet0/6
!
interface GigaEthernet0/7
!
interface GigaEthernet0/8
!
interface GigaEthernet0/9
!
interface GigaEthernet0/10
!
!
!
vlan 1,111,333,890
```



!
!
snmp-server trap-add-hostname
!

Test Result:

We use unplug cable, shutdown/no shutdown both way to test.

Shutdown/no shutdown test

Shutdown1:

	Tx Port	Rx Port	Flow Group	Tx Frames	Rx Frames	Frames Delta	Loss %	Packet Loss Duration (ms)	Tx Frame Rate	Rx Frame Rate	Rx B...
1	S2510P	CISCO	ipv4-EndpointSet...	133,450	133,425	25	0.019	30.000	833.500	833.500	20
2	CISCO	S2510P	ipv4-EndpointSet...	133,450	133,427	23	0.017	27.600	833.500	833.500	20
3	S2510P	CISCO	ipv6-EndpointSet...	133,450	133,425	25	0.019	30.000	833.500	833.500	20
4	CISCO	S2510P	ipv6-EndpointSet...	133,450	133,427	23	0.017	27.600	833.500	833.500	20

No shutdown 1:

	Tx Port	Rx Port	Flow Group	Tx Frames	Rx Frames	Frames Delta	Loss %	Packet Loss Duration (ms)	Tx Frame Rate
1	S2510P	CISCO	ipv4-EndpointSet...	68,035	68,032	3	0.004	3.600	833.500
2	CISCO	S2510P	ipv4-EndpointSet...	68,035	68,032	3	0.004	3.600	833.500
3	S2510P	CISCO	ipv6-EndpointSet...	68,035	68,032	3	0.004	3.600	833.500
4	CISCO	S2510P	ipv6-EndpointSet...	68,035	68,032	3	0.004	3.600	833.500

Shutdown 2:

	Tx Port	Rx Port	Flow Group	Tx Frames	Rx Frames	Frames Delta	Loss %	Packet Loss Duration (ms)	Tx Frame Rate
1	S2510P	CISCO	ipv4-EndpointSet...	48,504	48,478	26	0.054	31.200	833.500
2	CISCO	S2510P	ipv4-EndpointSet...	48,504	48,479	25	0.052	30.000	833.500
3	S2510P	CISCO	ipv6-EndpointSet...	48,504	48,478	26	0.054	31.200	833.500
4	CISCO	S2510P	ipv6-EndpointSet...	48,504	48,479	25	0.052	30.000	833.500



No shutdown 2:

	Tx Port	Rx Port	Flow Group	Tx Frames	Rx Frames	Frames Delta	Loss %	Packet Loss Duration (ms)	Tx Frame Rate
1	S2510P	CISCO	ipv4-EndpointSet...	72,099	72,096	3	0.004	3.600	833.500
2	CISCO	S2510P	ipv4-EndpointSet...	72,099	72,096	3	0.004	3.600	833.500
3	S2510P	CISCO	ipv6-EndpointSet...	72,099	72,096	3	0.004	3.600	833.500
4	CISCO	S2510P	ipv6-EndpointSet...	72,099	72,096	3	0.004	3.600	833.500

Uplug/Plug cable test

Unplug1

	Tx Port	Rx Port	Flow Group	Tx Frames	Rx Frames	Frames Delta	Loss %	Packet Loss Duration (ms)	Tx Frame Rate
1	S2510P	CISCO	ipv4-EndpointSet...	18,364	18,339	25	0.136	30.000	833.500
2	CISCO	S2510P	ipv4-EndpointSet...	18,364	18,336	28	0.152	33.600	833.500
3	S2510P	CISCO	ipv6-EndpointSet...	18,364	18,339	25	0.136	30.000	833.500
4	CISCO	S2510P	ipv6-EndpointSet...	18,364	18,336	28	0.152	33.600	833.500

Plug1

	Tx Port	Rx Port	Flow Group	Tx Frames	Rx Frames	Frames Delta	Loss %	Packet Loss Duration (ms)	Tx Frame Rate
1	S2510P	CISCO	ipv4-EndpointSet...	72,440	72,431	9	0.012	10.800	833.500
2	CISCO	S2510P	ipv4-EndpointSet...	72,440	72,432	8	0.011	9.600	833.500
3	S2510P	CISCO	ipv6-EndpointSet...	72,440	72,431	9	0.012	10.800	833.500
4	CISCO	S2510P	ipv6-EndpointSet...	72,440	72,432	8	0.011	9.600	833.500



Unplug2

	Tx Port	Rx Port	Flow Group	Tx Frames	Rx Frames	Frames Delta	Loss %	Packet Loss Duration (ms)	Tx Frame Rate
1	S2510P	CISCO	ipv4-EndpointSet...	23,404	23,376	28	0.120	33.600	833.000
2	CISCO	S2510P	ipv4-EndpointSet...	23,404	23,372	32	0.137	38.400	833.000
3	S2510P	CISCO	ipv6-EndpointSet...	23,404	23,376	28	0.120	33.600	833.000
4	CISCO	S2510P	ipv6-EndpointSet...	23,404	23,372	32	0.137	38.400	833.000

Plug2

	Tx Port	Rx Port	Flow Group	Tx Frames	Rx Frames	Frames Delta	Loss %	Packet Loss Duration (ms)	Tx Frame Rate
1	S2510P	CISCO	ipv4-EndpointSet...	67,064	67,061	3	0.004	3.600	833.500
2	CISCO	S2510P	ipv4-EndpointSet...	67,064	67,058	6	0.009	7.200	833.500
3	S2510P	CISCO	ipv6-EndpointSet...	67,064	67,061	3	0.004	3.600	833.500
4	CISCO	S2510P	ipv6-EndpointSet...	67,064	67,058	6	0.009	7.200	833.500

